



[CLICK HERE](#) for Video Tutorial



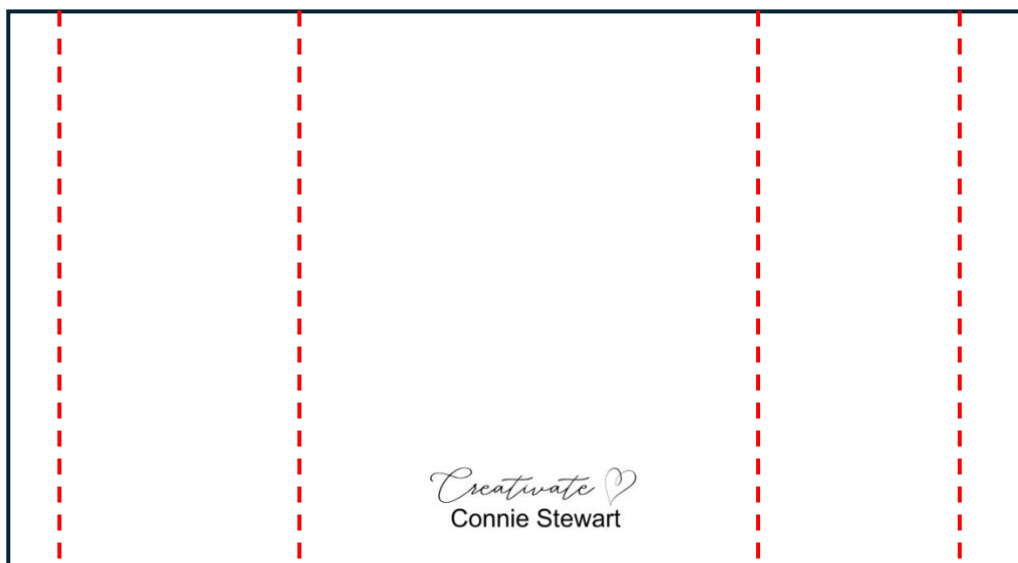
## Supplies:

- **Stamps:** Love & Courage
- **Cardstock/Paper:** Pretty in Pink, Basic White, 2024-2026 In Color Designer Series Paper (DSP)
- **Stampin' Pads:** Basic Gray, Pretty in Pink, White Craft
- **Other:** Paper Trimmer, Bone Folder, Pressed Flowers Embossing Folder, Blending Brush, Pretty in Pink Bordered Ribbon, Mini Glue Dots, Strong Adhesive, Medium Basic White Envelope

## Cutting & Scoring Instructions:

- **Pretty in Pink:**
  - (card base - Diagram A, B, C, E & F) 9 ½" x 5 ½"
  - (card lock - Diagram C, D & F) 10 ⅝" x 5 ½"
  - (inside layers) (2) 3" x 2 ⅝"
- **DSP:**
  - (side panel layers) (4) 1 ⅞" x 5 ¼"
  - (envelope flap) 6" x 2 ½"
- **Basic White:**
  - (inside card layers) (2) 2 ⅞" x 2 ½"
  - (front greeting) 1 ⅞" x 2 ½"

**DIAGRAM A - Card Base - 9 1/2" x 5 1/2"**  
 With the 9 1/2" at the top, score at 1/2", 2 5/8", 6 7/8", 9"

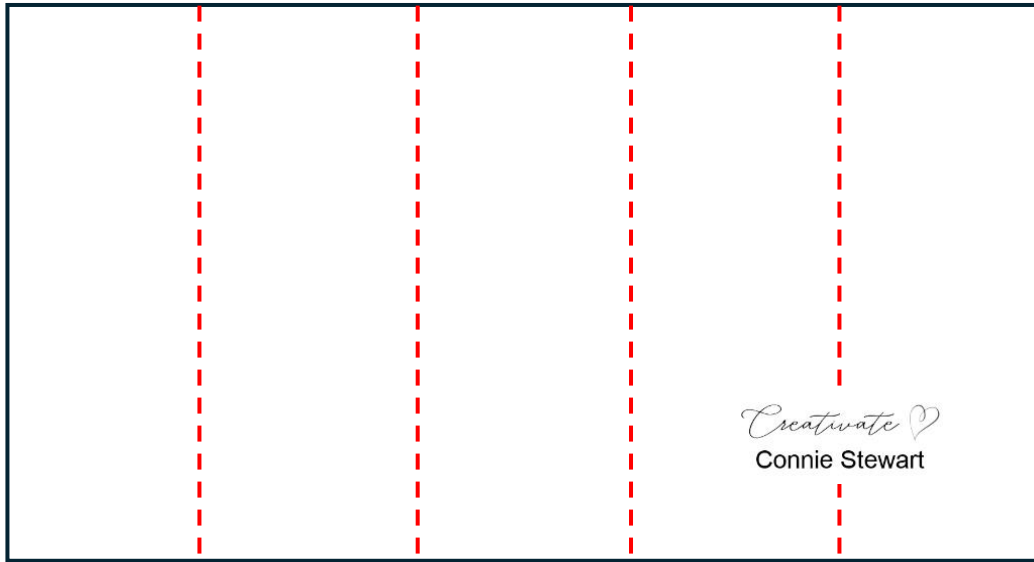


**DIAGRAM B – Card Base – 9 1/2" x 5 1/2"**

- With the 5 1/2" at the top, cut at 2 3/4" just to the 1/2" score line (dark green line)
- Rotate the cardstock around and repeat
- Miter the ends of the 2 3/4" x 1/2" tabs as shown in purple
- Trim away the 2 3/4" x 1/2" panels on each end (light green). The 2 3/4" mitered tabs remain intact
- With a bone folder, crease all the scored lines
- The left tab should be at the top and the right tab should be on the bottom.

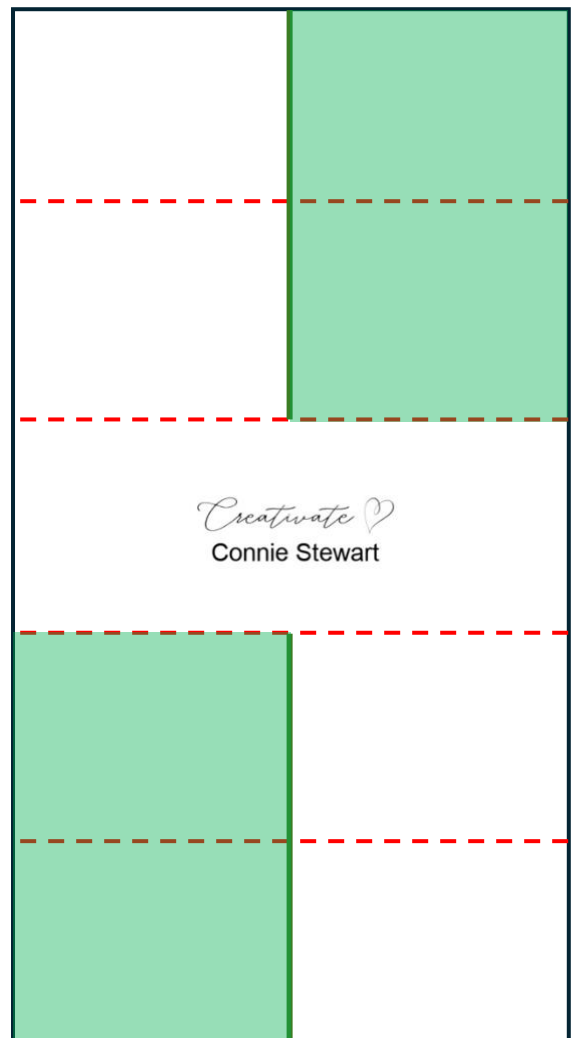


**DIAGRAM C – Card Lock - 5 ½" x 10 ⅝"**  
 With the 10 ⅝ at the top, score at 2 ⅛", 4 ¼", 6 ⅜", 8 ½"



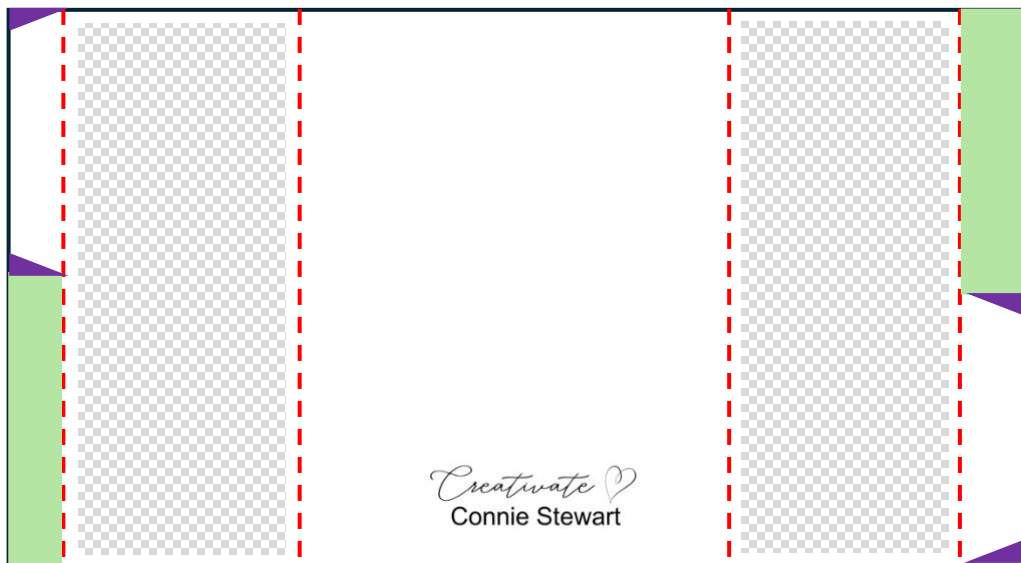
**DIAGRAM D – Card Lock - 5 ½" x 10 ⅝"**

- With the 5 ½" at the top, line up at 2 ¾" and cut down to the 4 ¼" score line (dark green line)
- Rotate the cardstock 180° and repeat
- Cut away the areas shown in light green
- With a bone folder, crease all the scored lines
- Save the pieces that you cut away and trim them to create the front pop-out layer and inside layers - (3) 1 ⅞" x 2 ½" (applies to the first card in this tutorial)



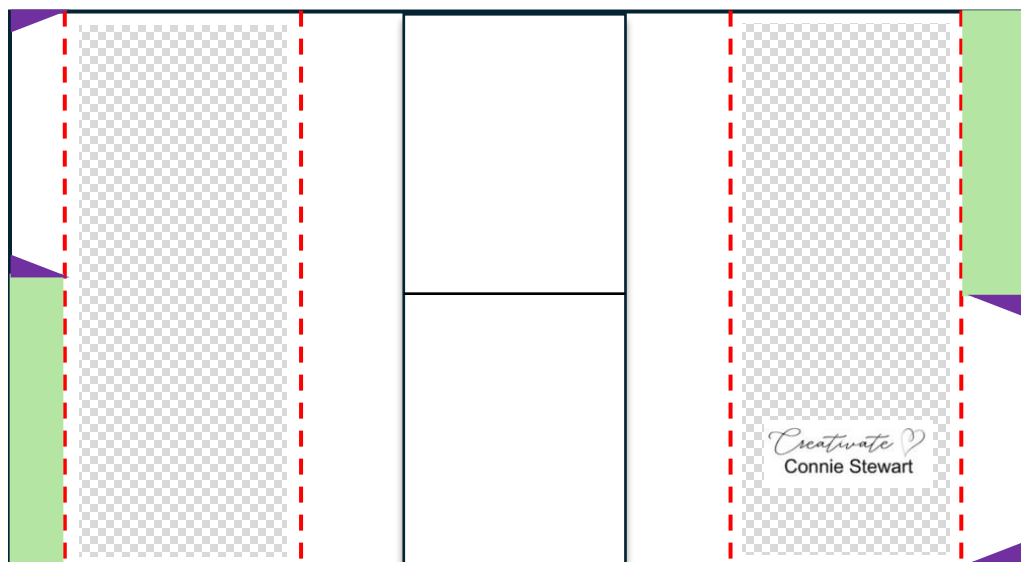
### DIAGRAM E - Card Base - 9 1/2" x 5 1/2"

- Adhere the (4) 1 7/8" x 5 1/4" DSP to the 2 1/8 x 5 1/2" outer panels of the card base (originally Diagram A), front and back.
- Be sure the left tab is at the top and the right tab is on the bottom.



### DIAGRAM F - Card Lock - 5 1/2" x 10 5/8"

- Accordion Fold the card lock bringing the squares at the top and bottom together in the center.
- Place adhesive on the back of the center 2 1/8 x 5 1/2" section of the lock. Adhere to the 4 1/4" x 5 1/2" section (center) of the card base.





## Instructions:

- Follow the instructions in Diagrams A through F.
- Run the (3) 1 7/8" x 2 1/2" Pretty in Pink front pop out layers you cut from the leftover from the lock through the embossing folder. With a blending brush, lightly brush the White craft ink over the embossed image. Set aside to dry.
- Place strong adhesive on the mitered tabs and adhere the outside interlocking panels.
- Open the card and adhere the (2) 3" x 2 5/8" inside layers Pretty in Pink cardstock inside the card on the upper right and lower left corners.
- On (1) 2 7/8" x 2 1/2" Basic White, stamp sentiment in Basic Gray in the center of the cardstock. Stamp ribbon and hearts in Pretty in Pink ink around it. Adhere to the 3" x 2 5/8" Pretty in Pink inside top layer.
- In Pretty in Pink ink, stamp a heart in the bottom right corner of the remaining 2 7/8" x 2 1/2" and adhere to the 3" x 2 5/8" Pretty in Pink inside bottom layer.
- To 'interlock' the card, bring the outer panels together and they will just click together.
- In Basic Gray ink, stamp the words on the left side of the 1 7/8" x 2 1/2" Basic White cardstock.
- In Pretty in Pink ink, stamp the ribbon on the bottom right corner. Adhere to the top interlocking panel.
- Adhere (2) 2 1/8" x 2 3/4" embossed/whitewashed panels on the inside and the bottom right panel. Adhere the remaining one to the bottom front interlocking panel.
- Wrap the ribbon around the left side of the card and tie in a bow. Center the bow in the card and place a mini glue dot under the knot to hold it in place.
- Adhere the 6" x 2 1/2" DSP to the envelope flap and trim away the excess.





### Supplies:

- **Stamps:** Peace on Earth
- **Cardstock/Paper:** Misty Moonlight, Basic White, Peaceful Garden Designer Series Paper (DSP), Peaceful Garden Glimmer Paper
- **Stampin' Pads:** Misty Moonlight
- **Other:** Paper Trimmer, Bone Folder, Strong Adhesive, Medium Basic White Envelope

### Cutting & Scoring Instructions:

- **Misty Moonlight:**
  - (card base - Diagram A, B, C, E & F) 9 ½" x 5 ½"
  - (card lock - Diagram C, D & F) 10 ⅝" x 5 ½"
  - (inside layers) (2) 3" x 2 ⅝"
- **DSP:**
  - (side panel layers) (4) 1 ⅞" x 5 ¼"
  - (front greeting layer) 1 ⅞" x ⅞"
  - (envelope flap) 6" x 2 ½"
- **Basic White:**
  - (front greeting) 1 ⅞" x 2 ½"
  - (inside card layers) (2) 2 ⅞" x 2 ½"
  - (die cut dove) 2 ½" x 2"
- **Glimmer Paper:**
  - (front pop-out layer and inside layers) (3) 1 ⅞" x 2 ½"
  - (front greeting separator) 2 ½" x ⅛"



### Instructions:

- Follow the instructions in Diagrams A through F.
- Place strong adhesive on the mitered tabs and adhere the outside interlocking panels.
- Open the card and adhere the (2) 3" x 2 5/8" inside layers Misty Moonlight cardstock inside the card on the upper right and lower left corners.
- In Misty Moonlight ink, stamp greeting on the top of the 1 7/8" x 2 1/2" Basic White. Adhere the 1 7/8" x 7/8" DSP underneath the greeting. Adhere the 2 1/2" x 1/8" glimmer paper to cover the seam. Adhere this greeting to the front locking panel at the bottom.
- Adhere the (3) 1 7/8" x 2 1/2" glimmer paper to the remaining (3) 2 1/8" x 2 3/4" panels.
- In Misty Moonlight ink, ink up the words 'peace, love' only. Stamp at the top of (1) 2 7/8" x 2 1/2" Basic White. Clean the stamp and ink up '& joy' and stamp underneath.
- Adhere to the top 3" x 2 5/8" Misty Moonlight cardstock.
- Adhere the remaining 2 7/8" x 2 1/2" Basic White on the bottom 3" x 2 5/8" Misty Moonlight cardstock to write your message.
- To 'interlock' the card, bring the outer panels together and they will just click together.
- Die cut a dove from the 2 1/2" x 2" Basic White and adhere on the glimmer paper panel on the front of the card.
- Adhere the 6" x 2 1/2" DSP to the envelope flap and trim away the excess.





### Supplies:

- **Stamps:** More Than Autumn
- **Cardstock/Paper:** Cajun Craze, Timid Tiger, Very Vanilla, Basic White, Pecan Pie
- **Stampin' Pads:** Early Espresso, Timid Tiger, Crumb Cake
- **Stampin' Blend:** Timid Tiger
- **Other:** Paper Trimmer, Bone Folder, More Than Autumn dies, Strong Adhesive, Medium Basic White Envelope

### Cutting & Scoring Instructions:

- **Cajun Craze:**
  - (card base - Diagram A, B, C, E & F) 9 ½" x 5 ½"
  - (card lock - Diagram C, D & F) 10 ⅝" x 5 ½"
  - (inside layers) (2) 3" x 2 ⅝"
  - (front greeting layer) 3 ¼" x ¾"
- **Very Vanilla:**
  - (stamped side panels) 7 ½" x 5 ¼"
  - (front panels) (2) 1 ⅞" x 2 ½"
  - (front greeting layer) 3" x ½"
  - (inside card layers) (2) 2 ⅞" x 2 ½"
  - (cup sleeve) Small scrap
  - (envelope flap) 6" x 2 ½"
- **Timid Tiger:** (inside panels and stamped cup) (3) 1 ⅞" x 2 ½"
- **Basic White:** (whipped cream) Small scrap
- **Pecan Pie:** (cinnamon stick) Small scrap



### Instructions:

- Mount the words 'Pumpkin' and 'Season' on one block and leave space in-between to add 'Spice' later. In Early Espresso ink, stamp 'Pumpkin / Season' on the bottom of (1) 1 7/8" x 2 1/2" Very Vanilla.
- Stamp these words randomly on the 7 1/2" x 5 1/4" Very Vanilla cardstock, with the 7 1/2" at the top.
- In Timid Tiger ink, stamp 'Spice' in-between the words on both pieces of cardstock. Set the 1 7/8" x 2 1/2" aside.
- In Early Espresso ink, stamp the small pumpkin to fill in any space on the cardstock. Color with the Timid Tiger Stampin' Blend.
- With the 7 1/2" at the top, cut your stamped cardstock into (4) 1 7/8" x 5 1/4" pieces.
- Follow the instructions in Diagrams A through F.
- Place strong adhesive on the mitered tabs and adhere the outside interlocking panels.
- Open the card and adhere the (2) 3" x 2 5/8" inside layers Cajun Craze cardstock inside the card on the upper right and lower left corners.
- Adhere the stamped 1 7/8" x 2 1/2" to the top front locking panel and a blank 1 7/8" x 2 1/2" Very Vanilla on the bottom locking panel.
- In Early Espresso ink, stamp the small pumpkin randomly on (2) 1 7/8" x 2 1/2" Timid Tiger. Adhere to the (2) inside panels.
- In Early Espresso ink, stamp 'Except Maybe You' at the top of (1) 2 7/8" x 2 1/2" Very Vanilla and a pumpkin in the bottom right corner. Stamp a pumpkin in the bottom left corner of the other 2 7/8" x 2 1/2" Very Vanilla. Color pumpkins with the Timid Tiger Stampin' Blend.
- Adhere to the top and bottom 3" x 2 5/8" Cajun Craze cardstock.
- To 'interlock' the card, bring the outer panels together and they will just click together.
- In Early Espresso ink, stamp the cup on the remaining 1 7/8" x 2 1/2" Timid Tiger and die cut.
- In Early Espresso ink, stamp the cinnamon stick on a small scrap of Pecan Pie.

- In Early Espresso ink, stamp the cup sleeve on a small scrap of Very Vanilla. Stamp a pumpkin in the center. Color with the Timid Tiger Stampin' Blend. Fussy cut the sleeve and adhere to the Timid Tiger cup.
- In Crumb Cake ink, stamp the whipped cream on a small scrap of Basic White.
- Adhere the cup, whipped cream, and cinnamon stick to the Very Vanilla on the bottom locking panel.
- In Timid Tiger ink, stamp 'Nothing's Better Than' on the 3" x 1/2" Very Vanilla. Adhere to the 3 1/4" x 3/4" Cajun Craze. Adhere to the front of the card at the top.
- In Early Espresso ink, stamp 'Pumpkin / Season' on the 6" x 2 1/2" Very Vanilla. In Timid Tiger ink, stamp 'Spice' in-between. Stamp pumpkins and color with the Timid Tiger Stampin' Blend. Adhere to the envelope flap and trim away the excess.

