

One Sheet Wonder Cards & Envelopes



The Basics:

- **DSP:** 12" x 12" (card and envelope)
- **Cardstock Color #1:** 3 ¾" x 10", score at 5" (card base)
- **Cardstock Color #2:** 4 ¼" x 5 ½" (card base back)
- **Neutral or Light Color Cardstock:** 3 ¼" x 4 ½" (inside layer)
- **Cardstock or Chipboard:** 5 ⅜" x 5 ⅜" (envelope template)

DIAGRAM A – 12" x 12" Designer Series Paper

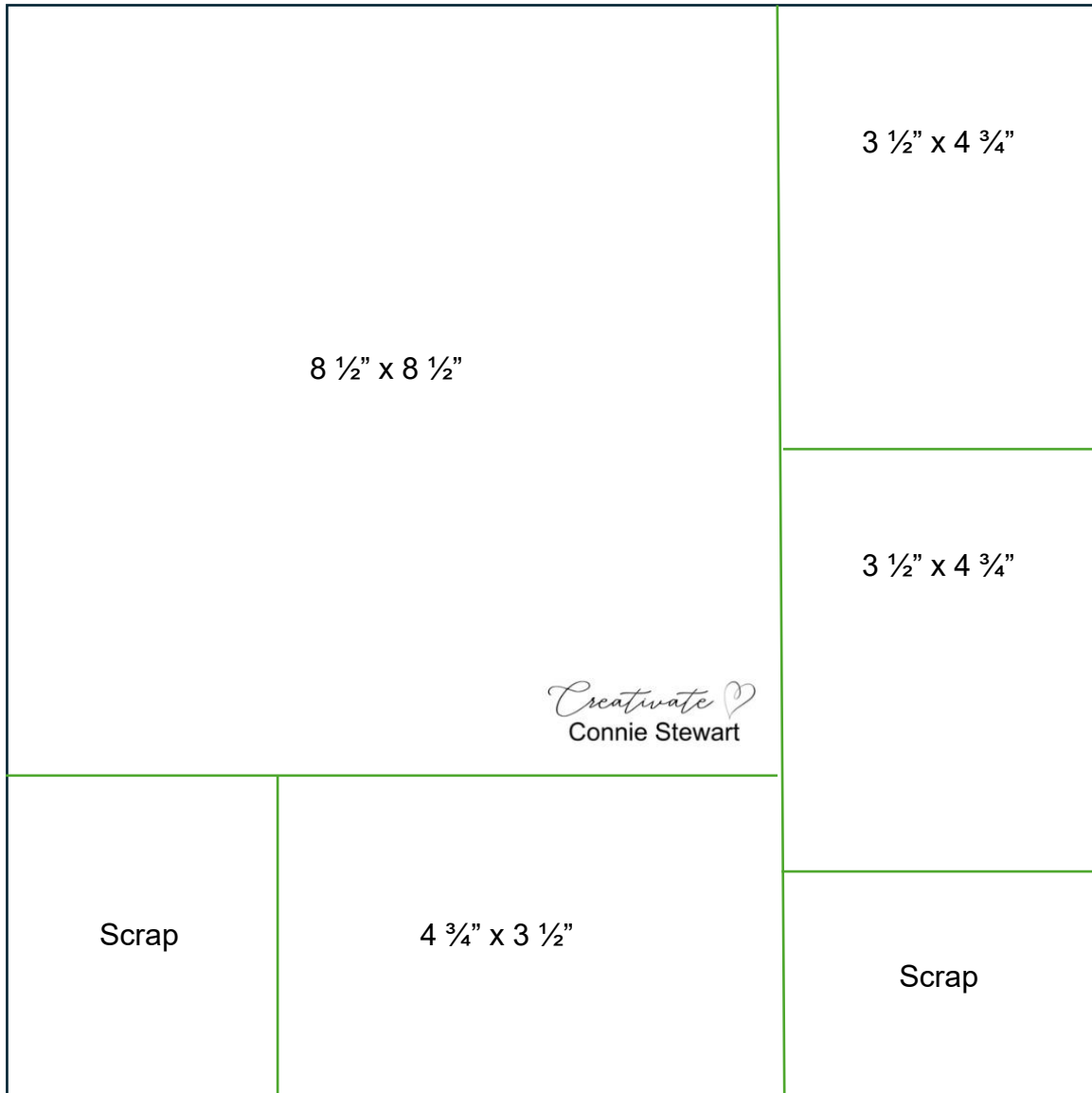


DIAGRAM B

- Cut at an angle into (2) triangles – mark (1) as 'Top & Bottom'
- Cut $\frac{3}{4}$ " off (1) short side of the remaining triangle and mark as 'Sides'
- Write $8\frac{1}{2}$ " x $8\frac{1}{2}$ " so you always know what size DSP you need to use when creating an envelope in the future

Cardstock or Chipboard: $5\frac{3}{8}$ " x $5\frac{3}{8}$ "
Envelope Template

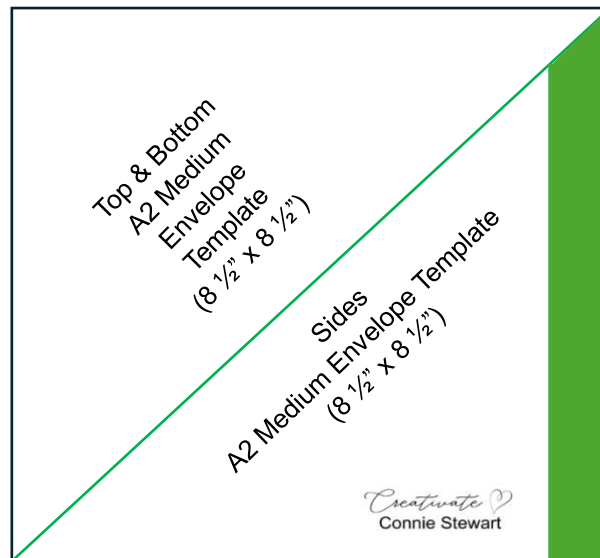
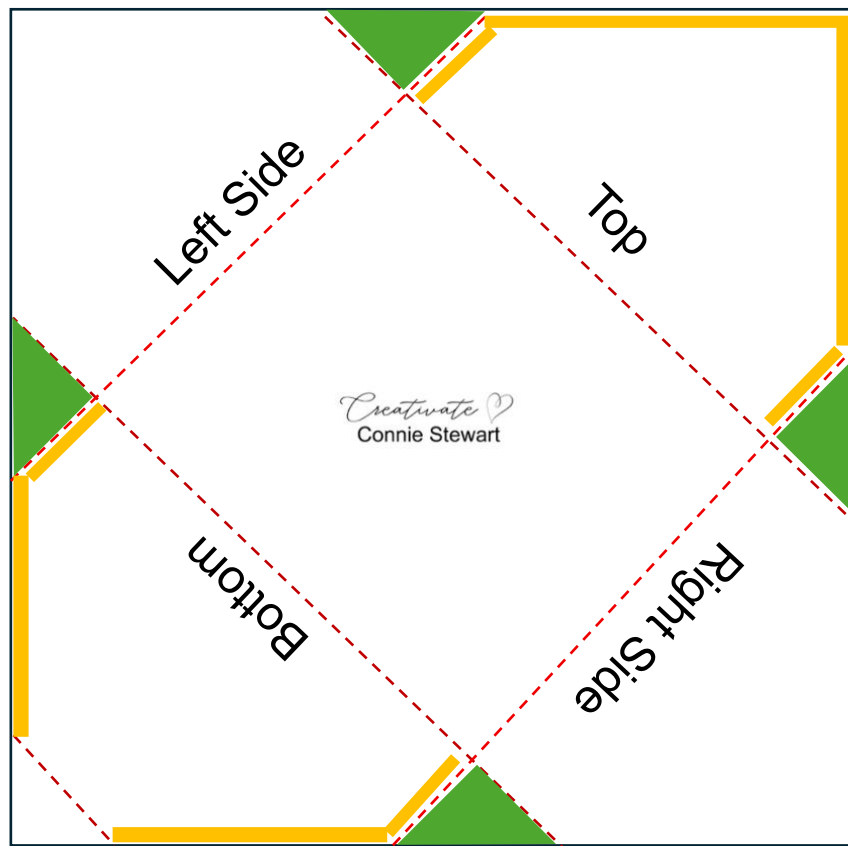


DIAGRAM C

- Line up the Top & Bottom template in one corner of the $8\frac{1}{2}$ " x $8\frac{1}{2}$ " DSP and score along the edge with a bone folder or stylus tool. Repeat on the opposite side.
- Line up the Sides template on the left corner and score along the edge with a bone folder or stylus tool. Repeat on the right side.
- Cut away the green triangles in diagram.
- Optional: Use a cut away triangle as a template to score a line on the bottom corner of the envelope and fold if you prefer a straight edge on the inside. Fold and adhere.
- Place Tear & Tape as shown inside of the envelope.
- Fold the left & right sides in, fold up the bottom and adhere in place.





Supplies:

- **Stamps:** Charming Day
- **Cardstock/Paper:** Secret Sea, Mossy Meadow, Basic White, Floral Charm Designer Series Paper (DSP)
- **Stampin' Pads:** Secret Sea, Mossy Meadow
- **Other:** Timid Tiger Faux Linen Ribbon, Adhesive of Choice

Cutting & Scoring Instructions:

- **DSP:** 12" x 12" (card layers and envelope – see Diagram A)
- **Secret Sea:**
 - 3 ¾" x 10", score at 5" (card base)
 - 3 ¾" x 1" (greeting layer)
- **Mossy Meadow:** 4 ¼" x 5 ½" (card base back)
- **Basic White:**
 - 3 ¼" x 4 ½" (inside layer)
 - 3 ¾" x ¾" (greeting)



Instructions:

- Cut the 12" x 12" DSP following Diagram A.
- Create the envelope template using Diagram B. Watch the video tutorial to make it easier.
- Create the envelope with Diagram C.
- Adhere the 3 ¾" x 10" Secret Sea card base on the front of the 4 ¼" x 5 ½" Mossy Meadow cardstock.
- Adhere the (3) 3 ½" x 4 ¾" DSP to the front and the inside of the card base. If desired, use both side of the DSP inside the card base.
- In Mossy Meadow ink, stamp sentiment on the 3 ¼" x 4 ½" Basic White cardstock and in Secret Sea ink, stamp the leaves on the bottom right corner. Adhere inside the card.
- In Mossy Meadow ink, stamp greeting on the right side of the 3 ¾" x ¾" Basic White. Adhere to the 3 ¾" x 1" Secret Sea.
- Tie the Timid Tiger ribbon in a knot around the left side and adhere at the bottom of the front of the card.



Supplies:

- **Stamps:** Extraordinary Flora
- **Cardstock/Paper:** Gorgeous Grape, Shaded Spruce, Basic White, Perennial Lavender Designer Series Paper (DSP)
- **Stampin' Pads:** Shaded Spruce, Black
- **Stampin' Blends:** Shaded Spruce (dark), Highland Heather (dark)
- **Other:** Thoughtful Moments Hybrid Embossing Folder, Extraordinary Flora die, Brayer, Mini Stampin' Dimensionals, Purple Fine Shimmer Gems, Adhesive of Choice

Cutting & Scoring Instructions:

- **DSP:** 12" x 12" (card layers and envelope – see Diagram A)
- **Gorgeous Grape:**
 - 3 ¾" x 10", score at 5" (card base)
 - 3 ¾" x 1" (greeting layer)
- **Shaded Spruce:**
 - 4 ¼" x 5 ½" (card base back)
 - 4" x 2 ½" (Hello die cut)
- **Basic White:**
 - 3 ¼" x 4 ½" (inside layer)
 - 5 ½" x 3 ½" (flowers)



Instructions:

- Cut the 12" x 12" DSP following Diagram A.
- Create the envelope template using Diagram B. Watch the video tutorial to make it easier.
- Create the envelope with Diagram C.
- Adhere the 3 ¾" x 10" Gorgeous Grape card base on the front of the 4 ¼" x 5 ½" Shaded Spruce cardstock.
- Adhere the (3) 3 ½" x 4 ¾" DSP to the front and the inside of the card base. If desired, use both side of the DSP inside the card base.
- Adhere the 3 ¼" x 4 ½" Basic White inside the card.
- Place the die face down in the embossing folder. Place the 4" x 2 ½" Shaded Spruce cardstock over the word 'Hello' and run through die cut & embossing machine.
- In Shaded Spruce ink, ink up the brayer and roll over the die cut word. Adhere to the front of the card with Mini Stampin' Dimensionals.
- In Black ink, stamp the Extraordinary Floral on the 5 ½" x 3 ½" Basic White; die cut. Choose 3 flowers and color with the Stampin' Blends.
- Adhere 2 flowers on the front of the card and the other on the bottom right corner of the inside of the card.
- Add shimmer gems to the center of the flowers.



Supplies:

- **Stamps:** With You In Mind
- **Cardstock/Paper:** Fresh Freesia, Misty Moonlight, Basic White, Peaceful Garden Designer Series Paper (DSP)
- **Stampin' Pads:** Fresh Freesia, Misty Moonlight
- **Other:** Three Banner Punch, Fresh Freesia Faux Velvet Ribbon, Mini Glue Dots, Adhesive of Choice

Cutting & Scoring Instructions:

- **DSP:** 12" x 12" (card layers and envelope – see Diagram A)
- **Fresh Freesia:**
 - 3 ¾" x 10", score at 5" (card base)
 - 3" x 1" (banner punch)
- **Misty Moonlight**
 - 4 ¼" x 5 ½" (card base back)
 - 2 ¼" x 2" (Hello die cut)
- **Basic White:**
 - 3 ¼" x 4 ½" (inside layer)
 - 2" x 1 ¾" (greeting)



Instructions:

- Cut the 12" x 12" DSP following Diagram A.
- Create the envelope template using Diagram B. Watch the video tutorial to make it easier.
- Create the envelope with Diagram C.
- Adhere the 3 ¾" x 10" Fresh Freesia card base on the front of the 4 ¼" x 5 ½" Misty Moonlight cardstock.
- Adhere the (3) 3 ½" x 4 ¾" DSP to the front and the inside of the card base. If desired, use both side of the DSP inside the card base.
- In Fresh Freesia ink, stamp sentiment on the 3 ¼" x 4 ½" Basic White cardstock and in Misty Moonlight ink, stamp the leaves on the bottom right corner, once, twice, and three time without reinking in-between. Adhere inside the card.
- In Fresh Freesia ink, stamp greeting on the 2" x 1 ¾" Basic White. Punch the center banner from the 3" x 1" Fresh Freesia cardstock. Cut the banner in half and adhere the banner ends on the 2" x 1 ¾" Basic White. Adhere to the 2 ¼" x 2" Misty Moonlight and adhere to the front of the card.
- Tie the ribbon in a bow and press the center of the bow into a mini glue dot. Adhere at the bottom of the greeting on the front of the card.