



Click to Watch the Video - [https://youtu.be/JZd0\\_XZjDk0](https://youtu.be/JZd0_XZjDk0)



## Supplies:

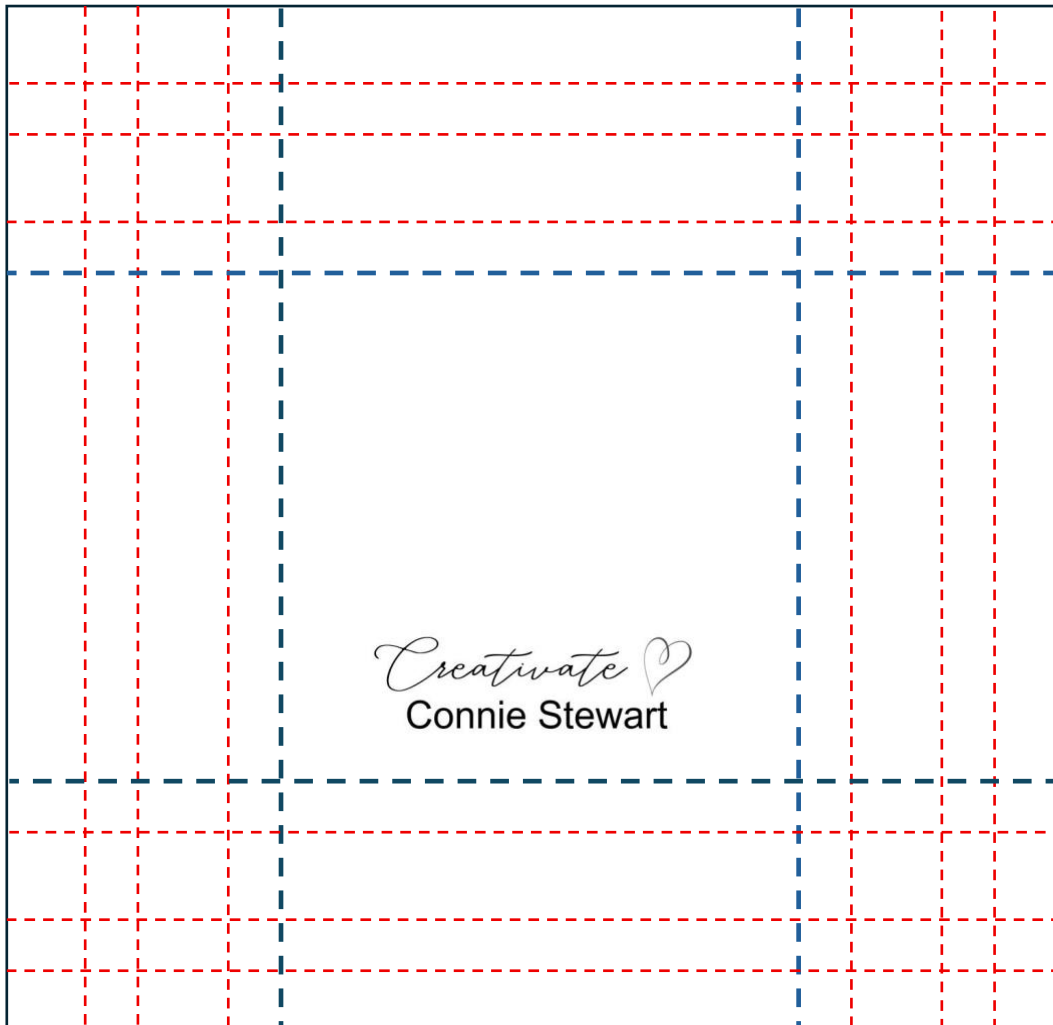
- **Stamps:** Wooley Friends
- **Cardstock/Paper:** Basic White Thick, Bubble Bath, Pastel Shimmer, Mixed Up Patterns Designer Series Paper (DSP),
- **Stampin' Pads:** Smoky Slate
- **Stampin' Blends:** Bubble Bath
- **Other:** Wooley Friends Builder Punch, Bone Folder, Paper Trimmer, Multipurpose Glue **AND/OR** Tear & Tape, Stampin' Dimensionals, Softest Spring Puffy Stickers, Black pen, Bubble Bath Faux Linen Ribbon, Mini Glue Dot, 3 3/4" x 3 3/4" Photo

## Cutting & Scoring Instructions:

- **DSP:** (frame – Diagram A & B) 12" x 12"
- **Pastel Shimmer (Bubble Bath):**
  - (center frame – Diagram C) 5 7/8" x 5 7/8"
  - (greeting layer) 1 3/4" x 1 1/4"
- **Bubble Bath:** (easel – Diagram D) 11" x 4 1/4"
- **Basic White Thick:**
  - (sheep punches) Scraps
  - (back of easel) 4" x 3 3/4" – optional for journaling
  - (greeting layer) 1 1/2" x 1"

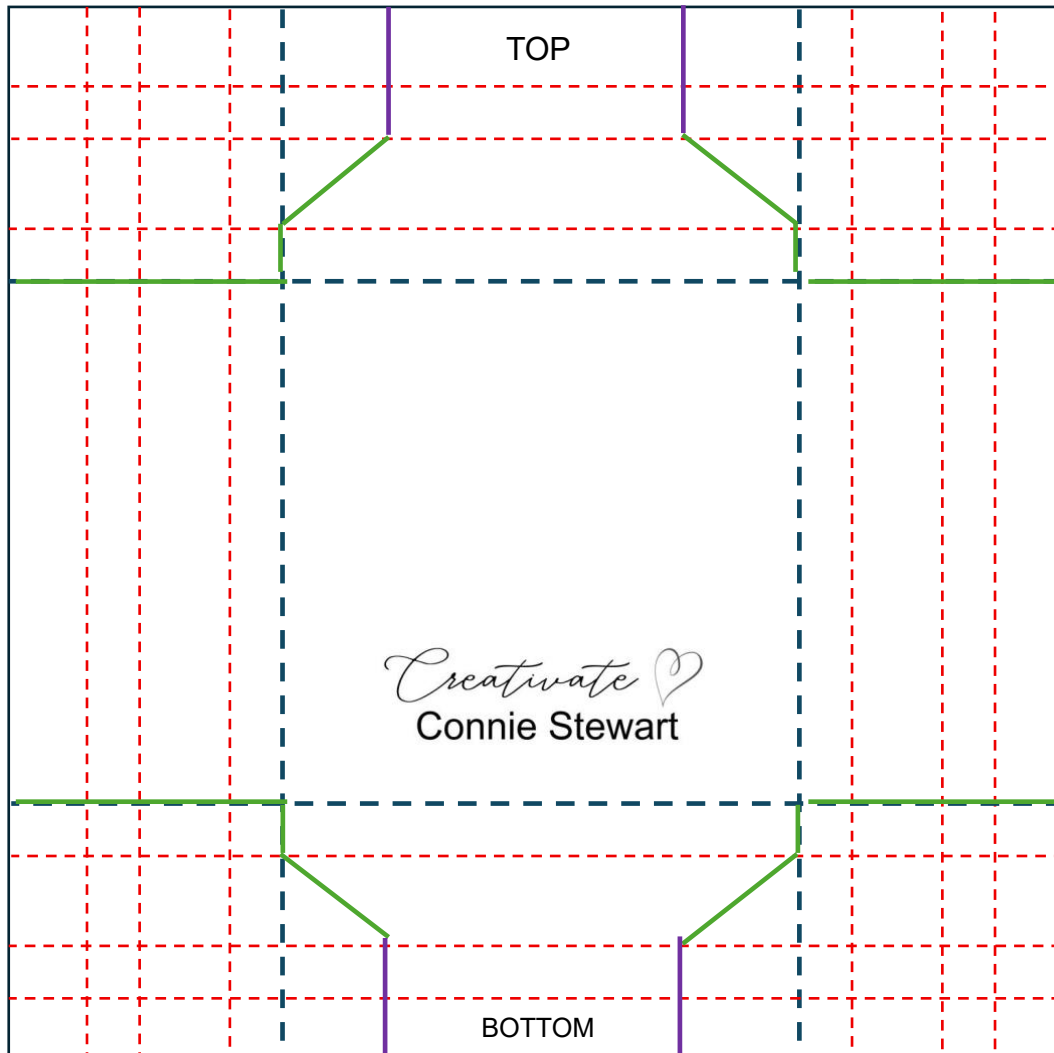
## Diagram A - Scoring

- **LIGHTLY SCORE** the DSP at 3" on all 4 sides (blue lines). This will make cutting much cleaner.
- Score the DSP at 1", 1 ½", and 2 ½" on all 4 sides (red lines)



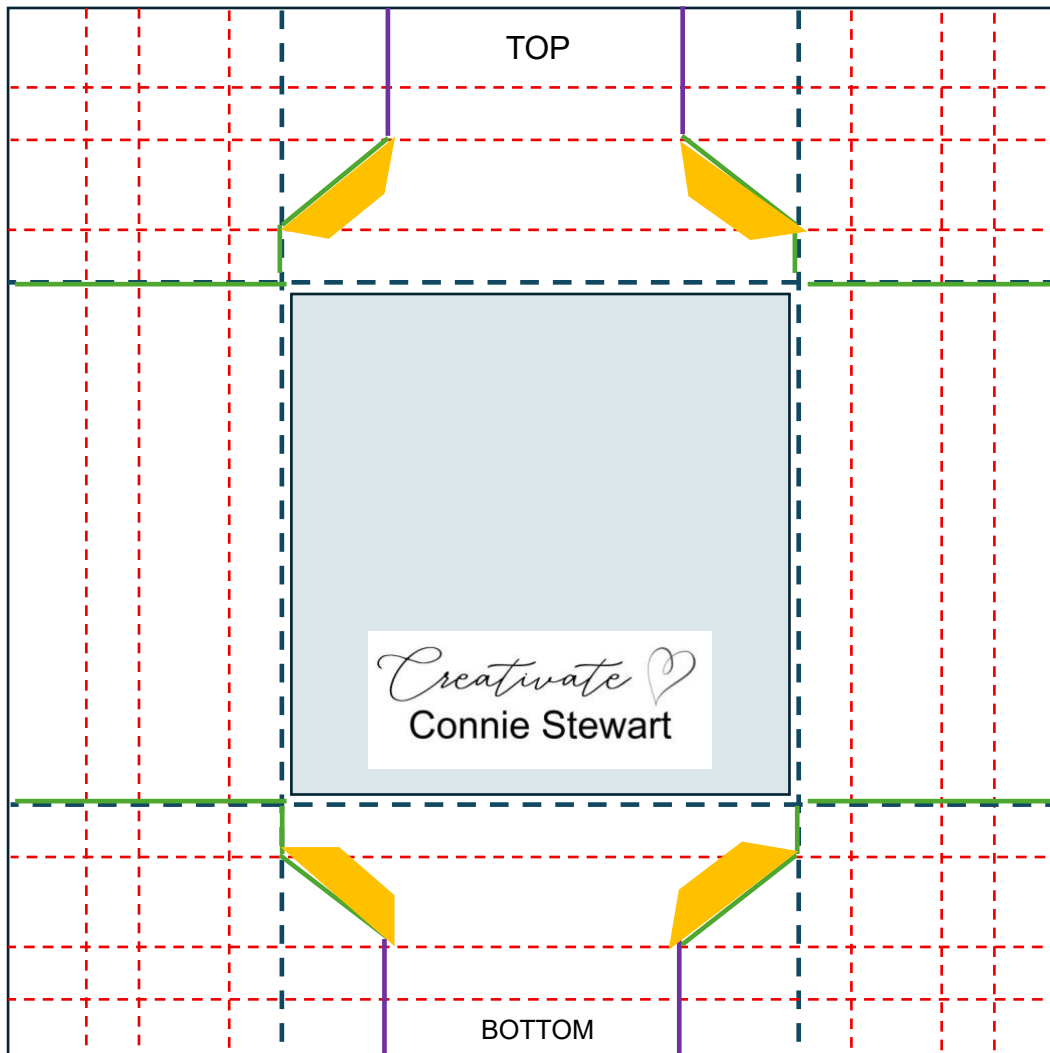
## Diagram B - Cutting

- On Top and Bottom **ONLY** – Cut at 4" and 8" down 1 ½" to the 2<sup>nd</sup> score line (purple lines)
- Cut along the 3 green lines in each corner as shown. TIP: It helps if you fold the top and bottom down to make the angled cut.
- TIP: If the edges of the DSP get jagged from the cutting on the scored lines, use a nail file or nail buffer to smooth it out.



### Diagram C - Assembly

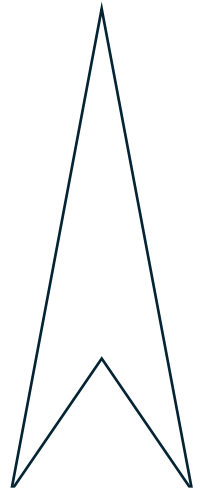
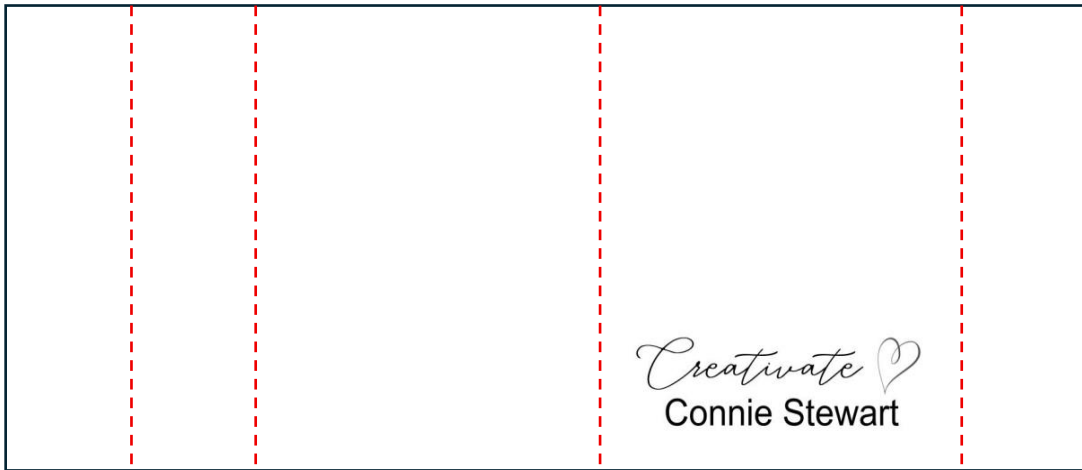
- Adhere the 5  $\frac{7}{8}$ " x 5  $\frac{7}{8}$ " cardstock in the center of the DSP.
- Place Tear & Tape along the back of the angled edges but don't remove the backing paper yet (yellow)



- Burnish all the scored lines with a Bone Folder.
- Begin with the Left side. Place Multipurpose Glue or Tear & Tape along the panel closest to the center of the frame. Fold under so that it adheres to the 5  $\frac{7}{8}$ " x 5  $\frac{7}{8}$ " cardstock. Repeat this on the Right side.
- To adhere the Bottom of the frame, remove the backings from the Tear & Tape. Place Multipurpose Glue or Tear & Tape along the panel closest to the center of the frame. Fold under so that it adheres to the 5  $\frac{7}{8}$ " x 5  $\frac{7}{8}$ " cardstock. Bring the corners together and press into the Tear & Tape. Repeat this on the Top.

## Diagram D - Easel

- Score the 11" x 4 ¼" at 1", 2", 6" and 10"
- Burnish all the scored lines with a Bone Folder.
- Adhere the (2) 1" section on the ends together to create the easel.
- Place Multipurpose glue or Tear & Tape on the back of the easel and gently adhere to the frame, making sure the frame is sitting flush with the bottom of the frame.



## Instructions:

- Follow the scoring and cutting instructions in Diagram A, B & C (pages 2-4).
- Tip: If you have a corner that doesn't adhere together the way you want, use this corner for the puffy stickers.
- In Smoky Slate ink, stamp and punch (2) sheep bodies, (3) sheep faces, and (3) bows from the scraps of Basic White Thick. Color the bow with the Dark Stampin' Blend. Add little cheeks to the sheep face with the Light Stampin' Blend. Color the feet with a black marker.
- Place a Stampin' Dimensional on the sheep body and adhere the face. Adhere the bow under her neck.
- Adhere the sheep on the bottom corners of the frame using Stampin' Dimensionals.
- In Smoky Slate ink, stamp greeting on the 1 ½" x 1" Basic White Thick. Adhere to the 1 ¾" x 1 ¼" Shimmer Paper. Adhere between the sheep using (2) Stampin' Dimensionals. Add a puffy sticker to the greeting if desired.
- Place puffy stickers on the upper corners of the frame.
- Make a bow from the ribbon and press the center of the bow into a mini glue dot and adhere where desired.
- In Smoky Slate ink, stamp (1) body on the bottom right corner of the 4" x 3 ¾" Basic White Thick. Color the feet with a black marker. In Smoky Slate ink, stamp a sentiment in the upper left corner.
- Create the easel following the scoring and adhering instructions in Diagram D (page 5). Adhere the stamped 4" x 3 ¾" Basic White Thick.
- Adhere a 3 ¾" x 3 ¾" photo inside the frame.





## Supplies:

- **Stamps:** Cheers & Sips, Notes & Totes
- **Cardstock/Paper:** Designer Series Paper (DSP): Celebratory Sips and Woven Textures, Early Espresso, Crumb Cake, Basic White, Blackberry Bliss
- **Stampin' Pads:** Blackberry Bliss, Strawberry Slush, Daffodil Delight
- **Other:** Bone Folder, Paper Trimmer, Multipurpose Glue **AND/OR** Tear & Tape, Dies: Cheers & Sips, Stylish Shapes, Stampin' Dimensionals, 3 ¼" x 3 ¼" Photo

## Cutting & Scoring Instructions:

- **DSP:** (frame – Diagram A & B) 12" x 12"
- **Early Espresso:**
  - (center frame – Diagram C) 5 ⅞" x 5 ⅞"
  - (easel – Diagram D) 11" x 4 ¼"
  - (fruit pick) Small scrap
- **Basic White:**
  - (center frame) 3 ¾" x 3 ¾"
  - (greeting ) 4" x ¾" – Score at ¾", 1 ¼", 2 ¾" and 3 ½"
  - (back of easel) 4" x 3 ¾" – optional for journaling
- **Blackberry Bliss:**
  - (center layer) 3 ½" x 3 ½"
  - (circle) 4" x 3"
- **Photo:** 3 ¼" x 3 ¼"

## Instructions:

- Follow the scoring and cutting instructions in Diagram A, B & C (pages 2-4).
- Tip: If you have a corner that doesn't adhere together the way you want, use this corner for the top.
- Adhere the 3 ¼" x 3 ¼" photo to the 3 ½" x 3 ½" Blackberry Bliss. Adhere this to the 3 ¾" x 3 ¾" Basic White and adhere inside the frame.
- From the 4" x 3" Blackberry Bliss, die cut the largest circle from Stylish Shapes. It will cut off the bottom but that will help the circle sit flush with the bottom of the frame. Adhere to the bottom left corner of the frame.
- Die cut (2) glasses from the DSP. Die cut (2) pieces of fruit from the DSP. Die cut a fruit pick from the scrap of Early Espresso. Cut a slit in the fruit so it can sit on the edge of the glass and the fruit pick. Adhere the tallest glass with Multipurpose Glue and the smaller glass with Stampin' Dimensionals to the Blackberry circle.
- In Strawberry Slush ink, stamp 'Cheers' in the center of the 4" x ¾" Basic White. In Blackberry Bliss ink, stamp 'to us' under it.
- Accordion fold the score line. Snip a banner on the ends. Adhere the banner ends on the upper right corner of the frame, allowing it to pop up.
- Create the easel following the scoring and adhering instructions in Diagram D (page 5).
- In Daffodil Delight, stamp the sun on the upper left corner of the 4" x 3 ¾" Basic White. In Blackberry Bliss ink, stamp 'relax & enjoy' next to the sun. Adhere to the back of the easel for journaling of the photo.





## Supplies:

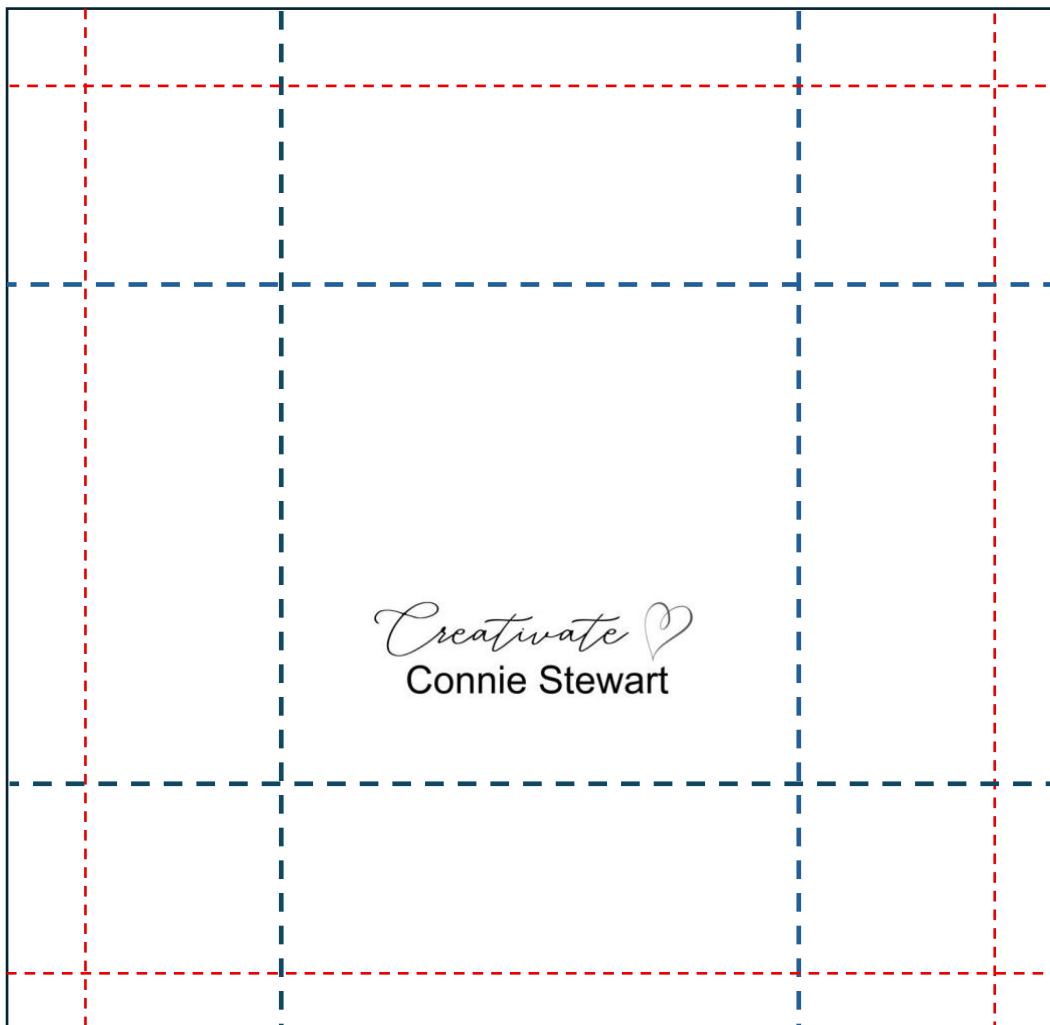
- **Cardstock/Paper:** Daffodil Delight Two Toned, Daffodil Delight, Basic Black, Real Red,
- **Stampin' Pads:** VersaMark
- **Other:** Bone Folder, Paper Trimmer, Sponge Dauber, Embossing Tool Kit, Heat Tool, Basics WOW Embossing Powder (white), Multipurpose Glue **AND/OR** Tear & Tape, Stylish Shapes, Low Profile Sparkle Dots, Real Red Shiny Ribbon, 3 ½" x 3 ½" Photo

## Cutting & Scoring Instructions:

- **Two-Toned:** (frame – Diagram E & F) 12" x 12"
- **Daffodil Delight:** (frame back) 5 ⅞" x 5 ⅞"
- **Basic Black:**
  - (center frame – Diagram C) 5 ⅞" x 5 ⅞"
  - (Mickey/Minnie) 8 ½" x 2 ½"
  - (easel – Diagram D) 11" x 4 ¼"
- **Real Red:**
  - (Mickey circle) 2 ½" x 2 ½"
  - (photo frame) 3 ¾" x 3 ¾"
- **Photo:** 3 ½" x 3 ½"

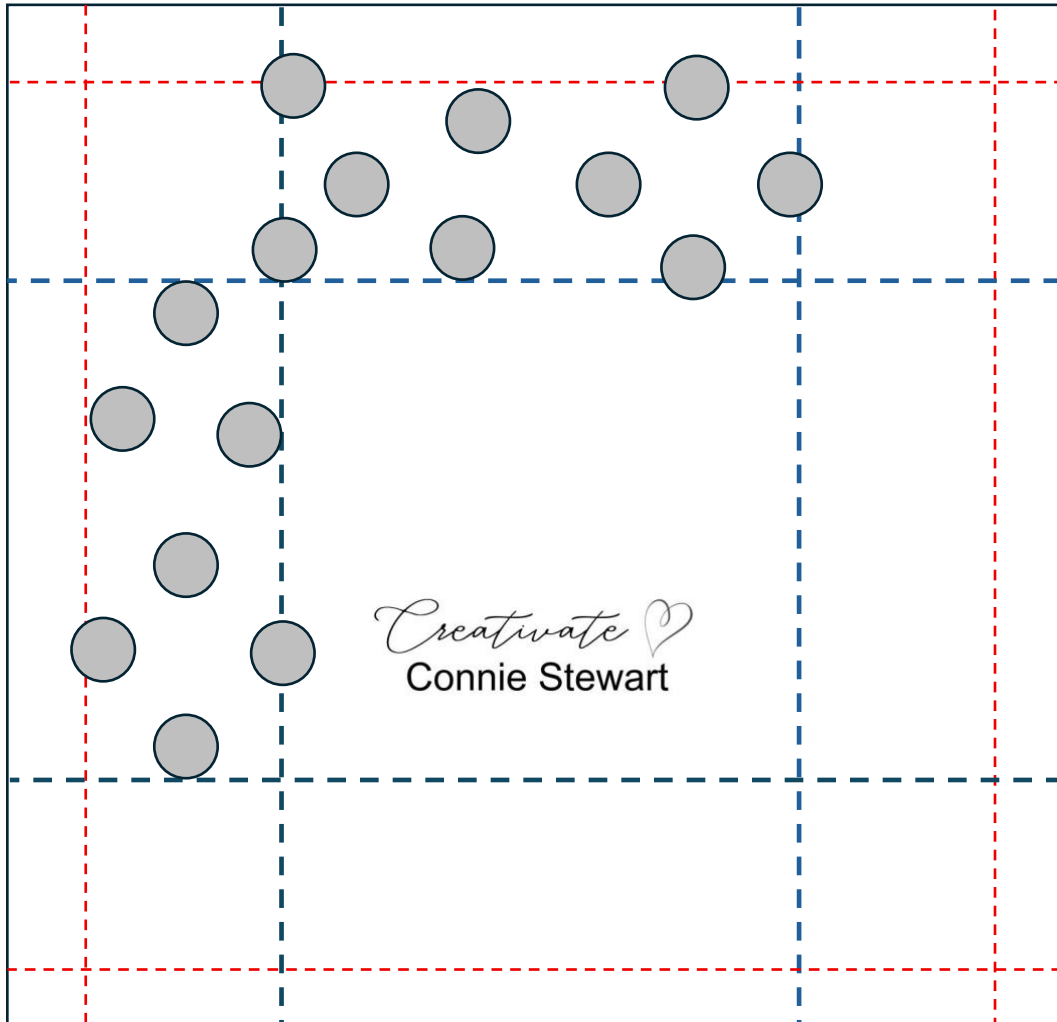
## Diagram E - Scoring

- **LIGHTLY SCORE** the DSP at 1" and 3" on all 4 sides (blue lines). This will make cutting much cleaner.
- Score at 1" on all 4 sides (red lines)



## Diagram F - Embossing

- Rub the Embossing Buddy over one side of the paper.
- Ink the sponge dauber in VersaMark ink and add polka dots on (2) 2" x 6" sections as shown.
- Sprinkle with White embossing powder, tap off the excess.
- Heat set the embossing powder with a heat tool.
- Repeat on the remaining (2) 2" x 6" sections.
- With the embossed side down, score at 1 ½" and 2 ½" on all 4 sides.



## Instructions:

- Follow the scoring and embossing instructions in Diagram E & F (page 10 & 11).
- Follow the cutting and assembly instructions in Diagram B & C (see page 3 & 4).
- Tip: If you have a corner that doesn't adhere together the way you want, use this corner for the top.
- Adhere the 3 ½" x 3 ½" photo to the 3 ¾" x 3 ¾" Real Red and adhere inside the frame.
- Adhere the 5 ⅞" x 5 ⅞" Daffodil Delight on the outside (this will add strength and hide any embossing that spilled over the sides).
- Mickey & Minnie:
  - From the 8 ½" x 2 ½" Basic Black, die cut (2) 2 ⅛" circles and (4) 1 ¼" circles. From the 2 ½" x 2 ½" Real Red, die cut a 2 ⅛" circle.
  - Cut (1) 2 ⅛" Basic Black circle in half and adhere to the Real Red circle (Mickey). Adhere the 1 ¼" circles just slightly separated at the top of each 2 ⅛" black circle.
  - Tie the ribbon in a small bow and trim the tails so they can't be seen on the back. Adhere the bow to the top of Minnie with a Mini Glue Dot.
- Create the easel following the scoring and adhering instructions in Diagram D.
- Adhere Mickey & Minnie to the top right and left of the frame.

